

Multidimensional Support For Families In Poverty: Barriers and Facilitators

Dominique Troost¹, Amina Kefi², Joyce Weeland¹, Renske Keizer¹, Mariëtte Lusse², Nicole Lucassen¹

Erasmus University Rotterdam¹, Rotterdam University of Applied Sciences²



Dominique Troost
 troost@essb.eur.nl

Background

- Theory suggests support for families in poverty should address multiple life domains and involve all family members in order to be most effective (Samuels et al., 2024; Sommer et al., 2024; Weeland et al., 2021; Yoshikawa et al., 2012)
- Despite these theoretical insights, little is known about what support for families in poverty looks like in practice
- Our study examined support provided by 11 organizations to families in poverty in Rotterdam, the city with the second-highest poverty rate in the Netherlands
- We examined whether support focused on a) multiple life domains and b) all family members (RQ1), and identified barriers and facilitators to provide support in practice (RQ2)

Results

LIFE DOMAINS AND FAMILY MEMBERS

- Support concerns multiple life domains, but the focus appears to be on **financial** matters, with less time spent on domains of parenting and participation in society
- Much of the support appears to be **practical** in nature, e.g. arranging things, applying for funds/aid, contacting other organizations/people
- Most of the support is **focused on parents**. Although this support might benefit children indirectly, there appears to be little attention to the specific needs of children
- Out of **778 codes**, **60 involved support specifically aimed at children**, but without participation of children (e.g., discussing low grades with a parent), and **14 involved support with participation of children** (e.g., talking with a child about their choice of school)

Method

28

Families

26

Professionals

followed for ~3 months

After each meeting with the family, the professional sent us an **update** about what happened during that meeting. The professional was also **interviewed** about the provided support and experienced facilitators and barriers.



244

Updates

27

Interviews

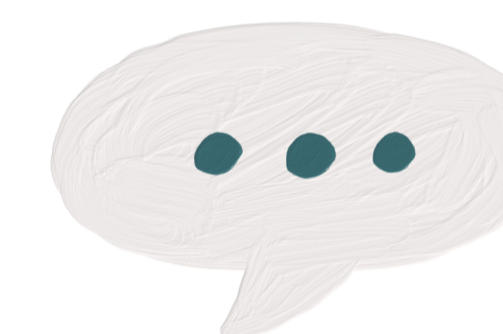
were analyzed using a semi-inductive coding approach

Examples of support

- Applying for funds or government aid
- Contacting organizations (Tax Authority, municipality, internet provider)
- Conversations about (financial) stress, mental or physical health
- Explaining (letters, regulations, systems)
- Arranging and checking payments, applications, etc.
- Making a (financial) overview

14-02-2023

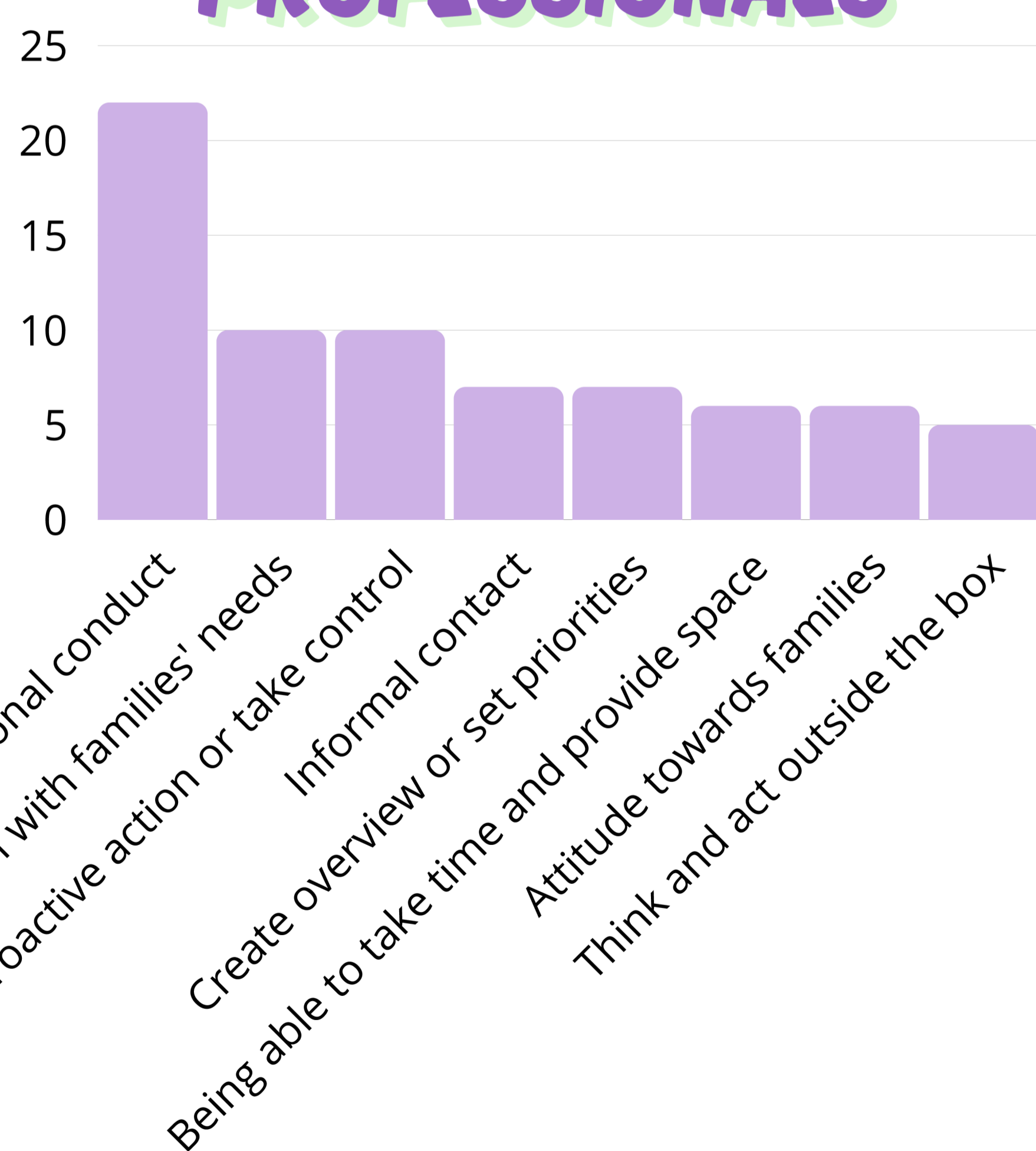
"We called the Tax Authority to make arrangements after the parents' divorce."



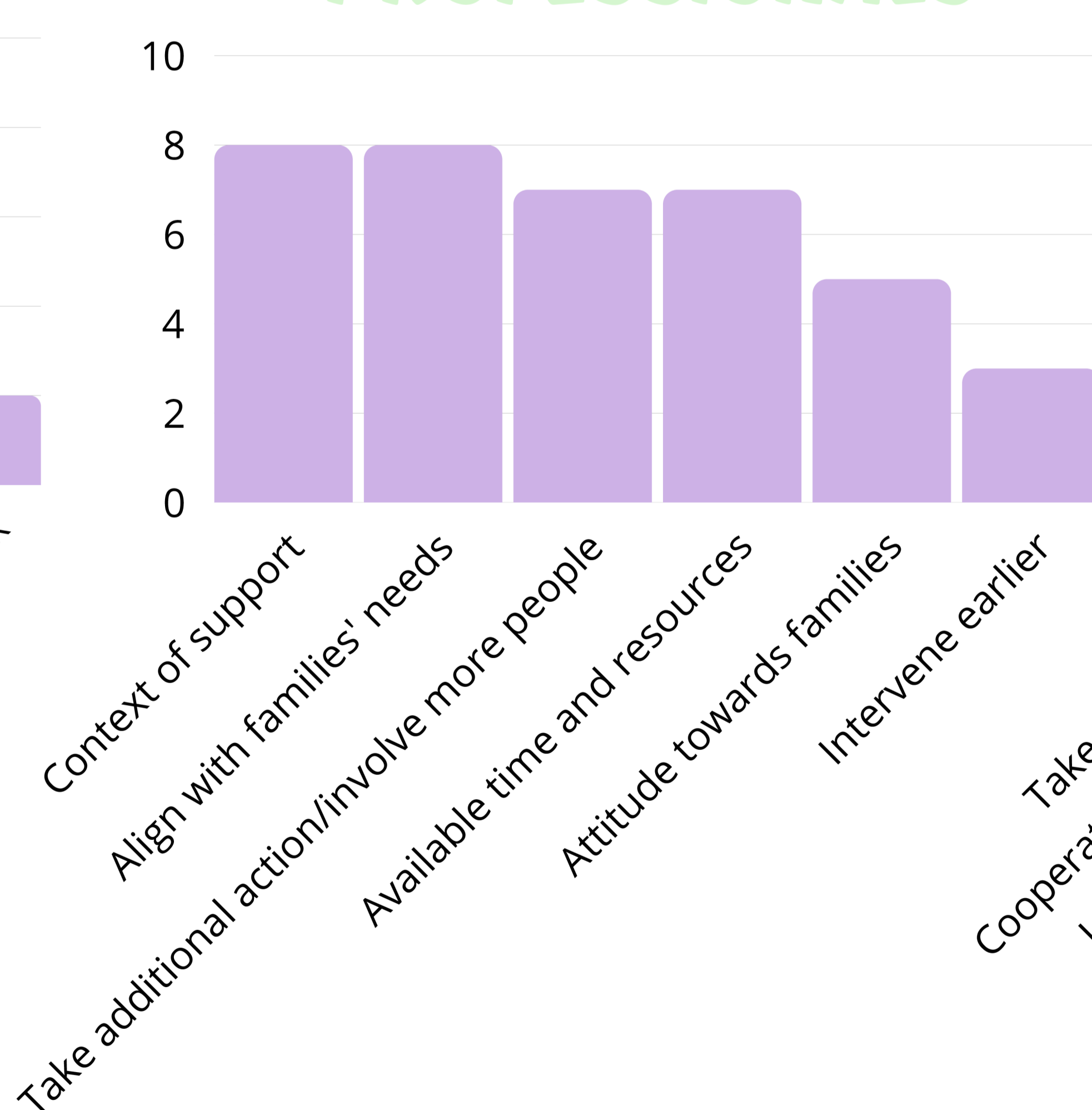
28-04-2023

"We talked about his financial worries. Then we applied for free public transport."

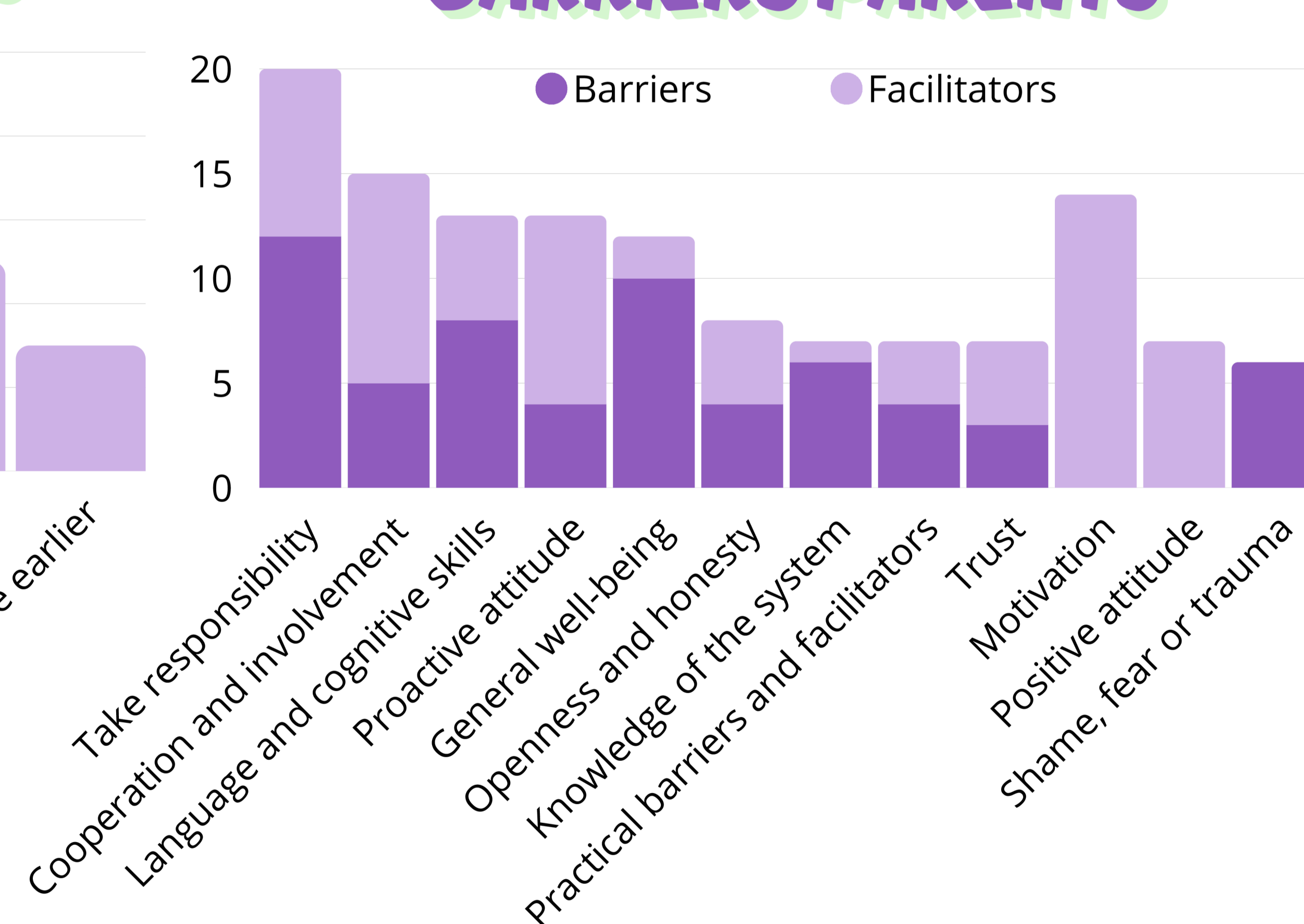
FACILITATORS PROFESSIONALS



BARRIERS PROFESSIONALS



FACILITATORS AND BARRIERS PARENTS



Next steps

- Fine-tune categories and themes
- Extract suggestions for improvement from interviews with professionals
- Write-up (scientific and policy brief)



This study was pre-registered on the Open Science Framework